

Squound Service Post

AT A GLANCE...

- Size: 70 x 70 mm
- Stock Colours: Anodised, Black, White, Grey
- Lengths: 3m, 4m, 6m
- Suitable for: Category 6 cabling

- A 'squound' shaped extruded aluminium service post.
- The service post is supplied natural anodised as standard. Also available in black, white and grey.
- Standard with 2 Divisions, option for no dividing barrier.
- This product has been examined in accordance with AS 3000 and conforms to A.C.M.A. requirements.
- Please nominate height of post.



“Easy as ECD®”



ESTABLISHED 1979

Electric Cable Duct Systems P/L

Phone: 1300 123 ECD (323)

Email: info@ecd.net.au

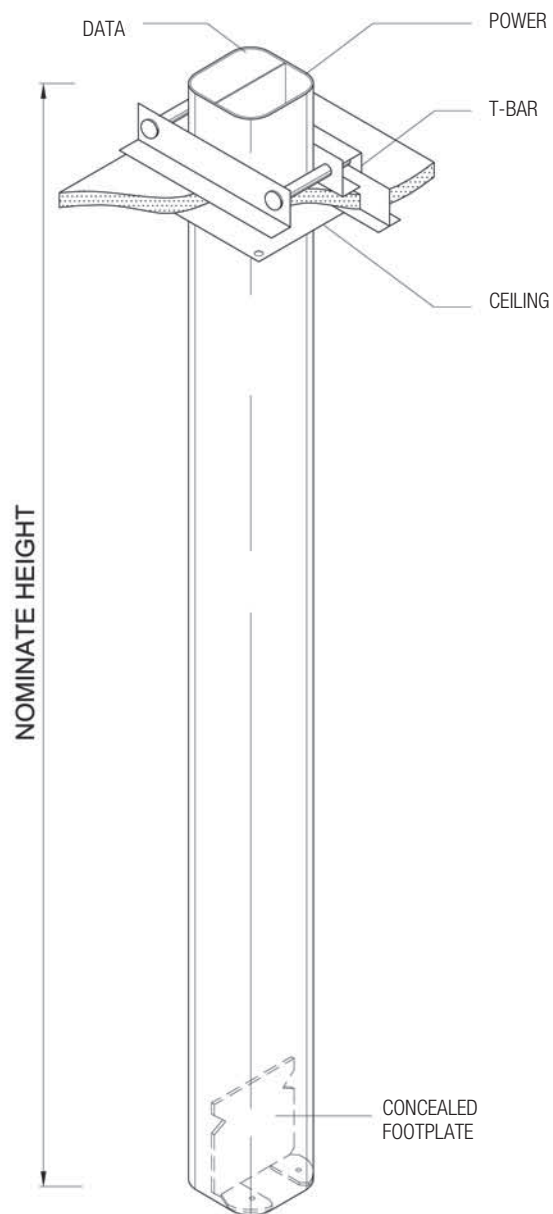
Fax: 1300 372 825

website: www.ecd.net.au

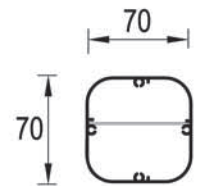
ABN 80005544105

ASSEMBLY DIAGRAM

SQUOOND SERVICE POST – SP7020



SECTION SP7020 POST



2-Division