

Flush Floor Duct Low Profile

AT A GLANCE...

- Size: 133 x 18 mm
- Outlets: Floor box mounted
- Body: Extruded aluminium
- Cover: Galvanised steel

“Easy as ECD®”

- Low profile flush floor duct – only 18 mm deep.
- Extruded aluminium body with removable screw fixed galvanised steel covers.
- Covers are pre-punched and countersunk.
- Supplied with leveling / joining brackets prefitted to duct body.
- Leveling / joining brackets provide facility to adjust duct height.
- This product has been examined in accordance with AS 3000 and A.C.M.A. requirements.
- Other sizes available to order.



ESTABLISHED 1979

Electric Cable Duct Systems P/L

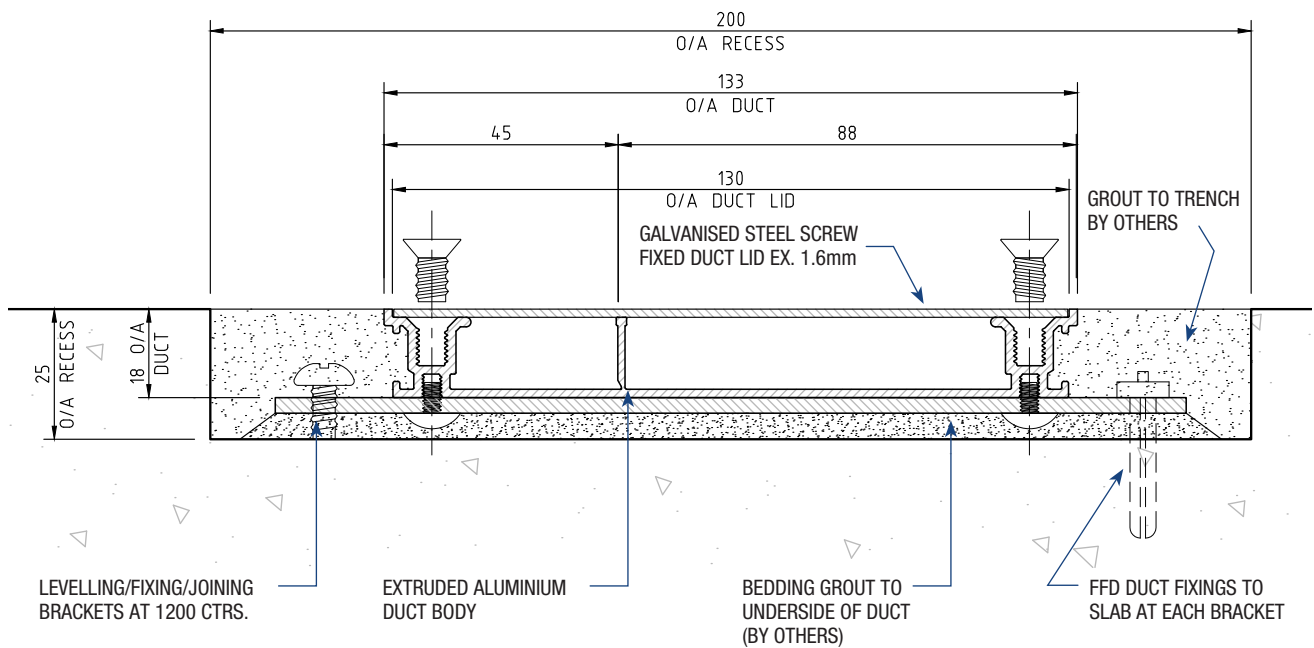
Phone: 1300 123 ECD (323)

Email: info@ecd.net.au

Fax: 1300 372 825

website: www.ecd.net.au

ABN 80005544105



SECTION VIEW

INSTALLATION FFD13018

- Installed into a preformed concrete recess provided by the builder, being 200(w) x 25(d)mm. Once duct is installed and levelled to floor level, the builder is required to grout the installation.

SUGGESTED SPECIFICATION

- The contractor shall allow to supply and install Electric Cable Duct Systems P/L Cat No. FFD13018 (133 x 18mm), Flush Floor Duct System, generally in accordance with the manufacturers technical publication and as identified on the plans and specifications of the project.
- The body shall be extruded aluminium with removable pre-punched and countersunk, galvanized steel covers.
- The system shall be a complete and workable system including levelling bracket, stop ends, access inspection ports, and floor outlet boxes.

PARTS LIST

DESCRIPTION	PART NO.
Duct body – 3.0m lengths	FFD13018D
Duct cover – 1.2m lengths	FFD13018C
90 degree bend junction	FFD13018B
Stop End	FFD13018SE
Above Floor Box (High)	AFB20
Above Floor Box Mounting Kit	FFD13018AP20