

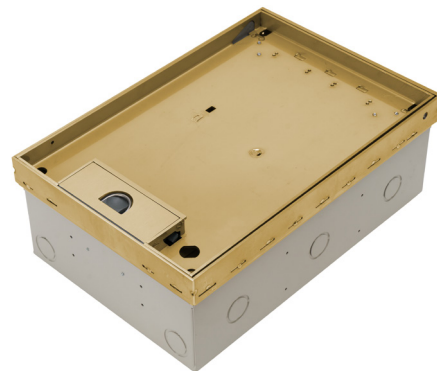
Flush Floor Box Deep Recessed, Brass, Soft Close**AT A GLANCE...**

- Capacity: 6 standard size plates
- Box Size: 370 x 250 x 133 mm Deep (c/w-Lid)
- Lid Material: Brass – No. 4 Linished
- Lid Recess: 20 mm Deep
- Suitable for: Cat6A and Cat7A Cabling

“Easy as ECD®”

- Recessed Brass lid and frame with 20mm rebate for floor finish (typically polished timber boards or ceramic tiles).
- Solid Brass lid construction with No. 4 Linished finish.
- Gas Strut Assistance to control lid closure – suits floor finish infills up to 1.2kg (eg. timber packer & carpet or full timber).
- Additional Gas Strut kit available to suit heavier floor finish infills from 2kg (eg. ceramic tile) up to 5kg (eg. stone). Custom heavier Gas Strut kits available to order.
- Frame has square edges (not beveled) to allow flush fitting to adjacent floor finish.
- Height adjustable lid and frame.
- Robust, large capacity cable exit flap with CableShield and brass lifting handle.

- Option to fit cam lock if required.
- Capacity for 6 standard outlet plates (3 x double power and 3 x Data and/or A.V.).
- Suitable for category 6A and 7A data cabling with generous bend radius capacity.
- Suitable for Audio / Video outlets including VGA, HDMI, USB, etc.
- Modular box body and lid design, interchangeable with plastic and other lids in the ECD® floor box range.
- Supplied with temporary construction lid.



ESTABLISHED 1979

Electric Cable Duct Systems P/L

Phone: 1300 123 ECD (323)

Email: info@ecd.net.au

Fax: 1300 372 825

website: www.ecd.net.au

ABN 80005544105

ASSEMBLY DIAGRAM

FLUSH FLOOR BOX – DEEP RECESSED, BRASS, SOFT CLOSE – FB6BDR

CABLE SHIELD®
TO CABLE EXIT
FLAP ASSEMBLY

SUPPLIED AS STANDARD WITH 1 GAS STRUT.
OPTIONAL SECOND GAS STRUT KIT AVAILABLE
FOR HEAVY LID INFILLS (PART NO. FB4SDR-GSK)
SUITS LID INFILLS FROM 2-5 KG (EG. CERAMIC
TILES - STONE)
CUSTOM GAS STRUT KITS AVAILABLE TO ORDER
FOR HEAVIER INFILLS.
LID INFILLS BETWEEN 1.2 & 2 KG WILL REQUIRE
EITHER A CUSTOM WEIGHTED PACKER (RECESS
DEPTH PERMITTING) TO REACH 2KG OR A FITTED
CAM LOCK TO HOLD THE LID CLOSED.

FB6BDR BRASS DEEP RECESSED GAS STRUT
CLOSE ASSISTED LID AND FRAME ASSEMBLY
WITH CABLE EXIT, RUBBER DUST SEAL AND
RECESSED LIFTING HANDLE
(OVERALL LID SIZE 370 x 250 x 38 DEEP)
(RECESS 20mm DEEP)

NOTE: SINGLE GAS STRUT SUITS LID INFILLS UP
TO 1.2KG (EG. TIMBER PACKER & CARPET OR
FULL TIMBER INFILL)

POINT LOAD TABLE	
LOAD TYPE	MAX LOAD
25 X 25 PT. LOAD	200kg
150 X 60 WHEEL	180kg

LID ADJUSTMENT
LEGS 4 PLACES

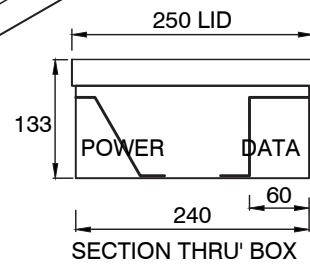


DATA PLATE VIEW

OUTLET MOUNTING
BRACKET TO SUIT 3 No.
DOUBLE GPOs

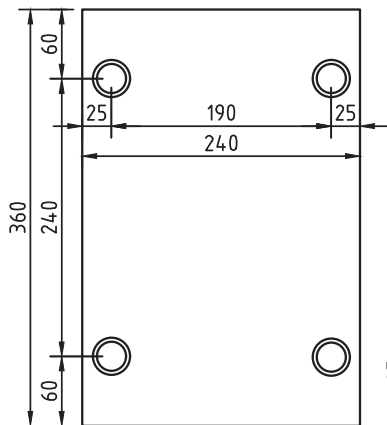
OUTLET MOUNTING
BRACKET TO SUIT 3 No.
STANDARD DATA GRID
PLATES

STEEL BOX BODY
(360 x 240 x 133mm DEEP)
12 No. 25ø/32ø COMBINATION
CONDUIT KNOCKOUTS

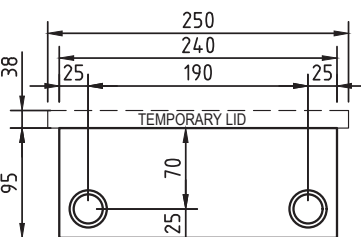


SECTION THRU' BOX

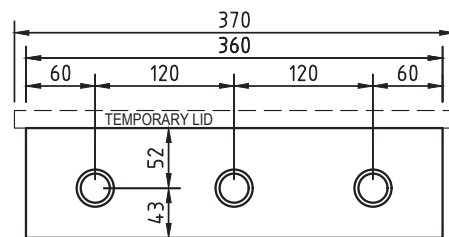
NOMINAL RECESS SIZE
370 x 250 x 140 (NOM.) DEEP FOR TIMBER FLOOR OR
400 x 300 x 140 FOAM BLOCKOUT FOR CONCRETE



CONDUIT LOCATION
BOX BASE



CONDUIT LOCATION
HINGE & EXIT SIDES



CONDUIT LOCATION
OUTLET SIDES