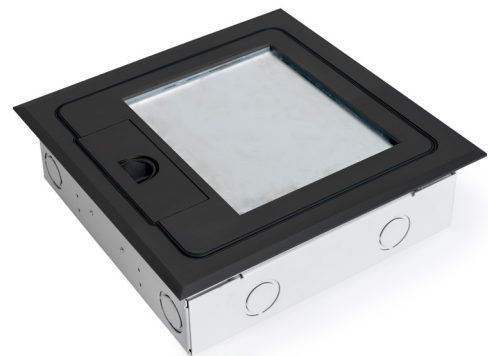


**PROTECTOR™ SERIES Flush Floor Box** Recessed, Black**AT A GLANCE...**

- Capacity: 4 x single auto switch power outlets and 6 x data mounts
- Box Size: 240 x 240 x 70 mm Deep
- Features:
  - **Cable Shield®** Frame
  - Soft close lid
- Lid Material: Stainless Steel – black plated
- Recess: 6mm Deep
- Suitable for: Cat6A & 7A Cabling

**“Easy as ECD®”**

- Recessed Protector™ Series Black Plated Stainless Steel lid and frame with 6mm rebate for floor finish (typically carpet or vinyl).
- Protector™ Series features
  - **Cable Shield®** Frame assembly to prevent cables being cut. (Patent Certified 2017100897 & Patent Pending 2015204344)
  - Soft close lid to stop lid from slamming shut
  - Cable retainer for easy cable management.
- Robust and large capacity cable exit flap with retracting lifting handle.
- Capacity for 4 x single auto switch power outlets and 6 x data mounts.
- Suitable for category 6A and 7A data cabling with generous bend radius capacity.
- Suitable for Audio / Video outlets including VGA, HDMI, USB, etc.
- 304 Grade Solid Stainless Steel – black plated.
- Modular box body and lid design, interchangeable with plastic and other lids in the ECD® floor box range.
  - Supplied with temporary construction lid.
  - Option to fit cam lock if required.



ESTABLISHED 1979

**Electric Cable Duct Systems P/L**

Phone: 1300 123 ECD (323)

Fax: 1300 372 825

Email: [info@ecd.net.au](mailto:info@ecd.net.au)website: [www.ecd.net.au](http://www.ecd.net.au)

ABN 80005544105

## ASSEMBLY DIAGRAM

### PROTECTOR™ SERIES FLUSH FLOOR BOX – RECESSED BLACK PLATED STAINLESS STEEL – FB4SRBK70

FB4SRBK BLACK PLATED STAINLESS STEEL RECESSED LID AND FRAME ASSEMBLY WITH **CABLE SHIELD®** FRAME, SOFT CLOSER, CABLE EXIT, RUBBER DUST SEAL AND RECESSED LIFTING HANDLE (OVERALL LID SIZE 266 x 266)

