

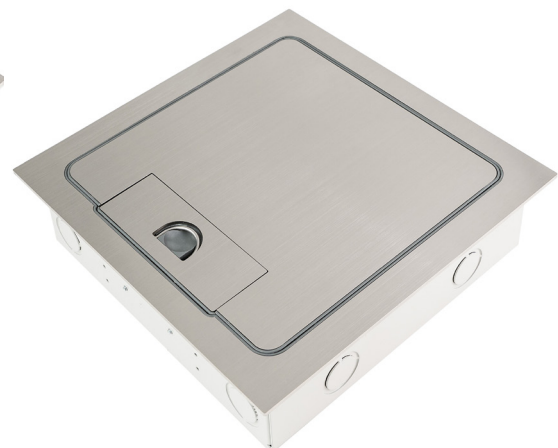
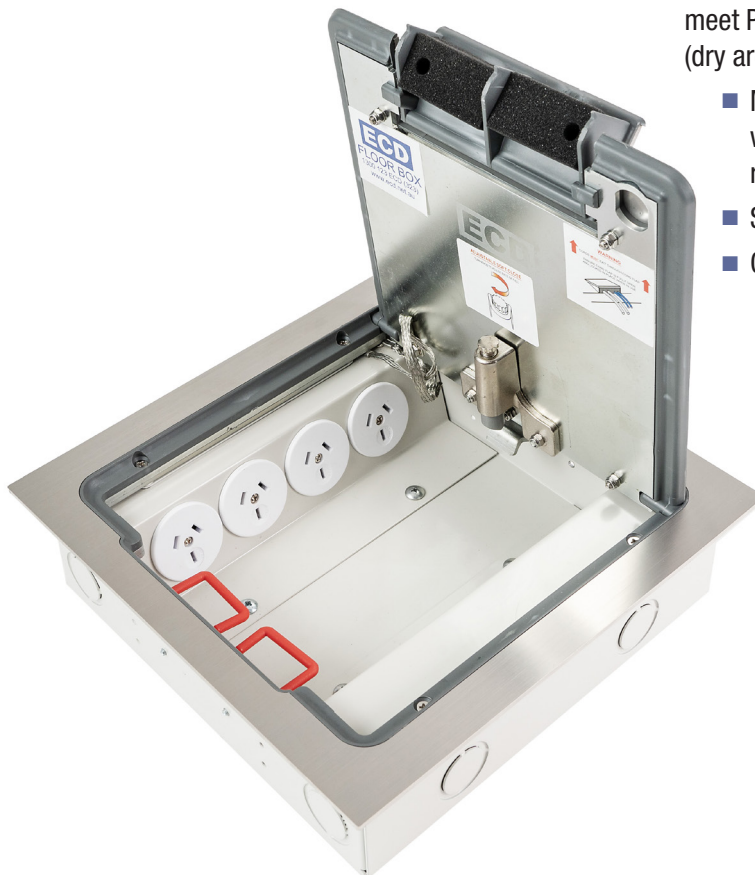
PROTECTOR™ SERIES Flush Floor Box

Flush, Square Edged, Stainless Steel

AT A GLANCE...

- Capacity: 4 x single auto switch power outlets and 6 x data mounts
- Box Size: 240 x 240 x 70mm deep
- Features:
 - **Cable Shield®** Frame
 - Soft close lid
- Lid Material: Stainless 304 – No. 4 Linished
- Suitable for: Cat6A & 7A Cabling
- Load Rating: 120kg (per foot = foot traffic)

“Easy as ECD®”



- Flush Protector™ Series stainless steel lid and frame with No. 4 Linished finish.
- Frame has square edges (not bevelled) to allow flush fitting to adjacent floor finish (typically timber, tile or vinyl).
- Protector™ Series features
 - **Cable Shield®** Frame assembly to prevent cables being cut. (Patent Certified 2019268210 & 2015204344)
 - Soft close lid to stop lid from slamming shut
 - Cable retainer for easy cable management.
- Robust and large capacity cable exit flap with stainless steel lifting handle.
- Capacity for 4 x single auto switch power outlets and 6 x data mounts.
- Suitable for category 6A and 7A data cabling with generous bend radius capacity.
- Suitable for Audio / Video outlets including VGA, HDMI, USB, etc.
- 304 Grade solid stainless steel with No. 4 Linished finish to meet P1 requirements for slip resistance in public spaces (dry areas).
 - Modular box body and lid design, interchangeable with plastic and other lids in the ECD® floor box range.
 - Supplied with temporary construction lid.
 - Option for factory fitted cam lock if required.



ESTABLISHED 1979

Electric Cable Duct Systems P/L

Phone: 1300 123 ECD (323)

Email: info@ecd.net.au

Fax: 1300 372 825

website: www.ecd.net.au

ABN 80005544105

ASSEMBLY DIAGRAM

PROTECTOR™ SERIES FLUSH FLOOR BOX – FLUSH, SQUARE EDGED, STAINLESS STEEL – FB4SQF70

FB4SQF SQUARE EDGE STAINLESS STEEL
FLUSH LID AND FRAME ASSEMBLY WITH
CABLE SHIELD® FRAME, SOFT CLOSER, CABLE
EXIT, RUBBER DUST SEAL AND RECESSED
LIFTING HANDLE (OVERALL LID SIZE 266 x 266)

