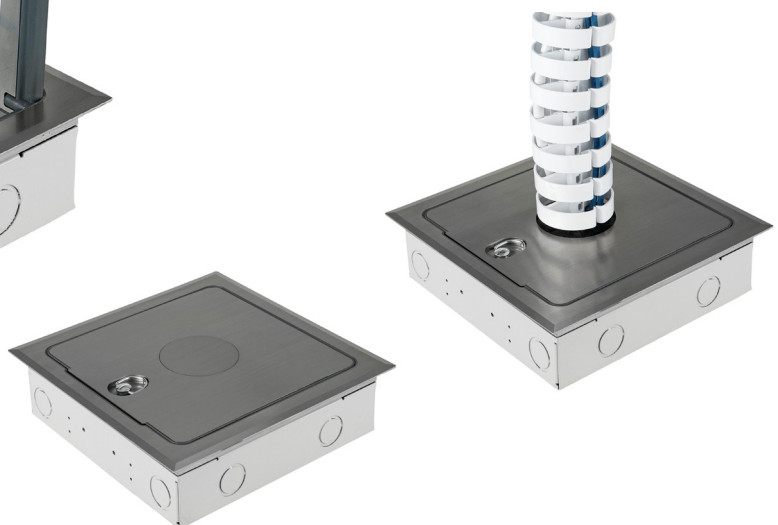


PROTECTOR™ SERIES Flush Floor Box Flush, Stainless Steel**AT A GLANCE...**

- Capacity: 1 x rewirable starter socket and 6 x data mounts
- Box Size: 240 x 240 x 70 mm deep
- Features: Umbilical access
- Lid Material: Stainless 304 – No. 4 Linished
- Suitable for:
 - Soft wired power
 - Cat6A & 7A Cabling

“Easy as ECD®”

- Flush Protector™ Series 304 grade Stainless Steel lid and frame with No. 4 Linished finish.
- Protector™ Series features
 - **Cable Shield®** Frame assembly to prevent cables being cut. (Patent Certified 2017100897 & Patent Pending 2015204344)
 - Soft close lid to stop lid from slamming shut.
- Quarter turn locking latch with lifting handle.
- Umbilical access hole with dust cover while in use and blank cover for when not in use.
- Supplied with:
 - 1 x UMF780 under desk umbilical
 - 1 x FC soft wired rewirable starter socket
 - 1 x CL1500 1.5m interconnecting lead.
- Capacity for 1 x rewirable starter socket (supplied) and 6 x data mounts (bezels supplied).
- *Note: not for use with GPOs and 3 pin plugs.
- Suitable for category 6A and 7A data cabling with generous bend radius capacity.
- Suitable for Audio / Video outlets including VGA, HDMI, USB, etc.
- Modular box body and lid design, interchangeable with plastic and other lids in the ECD® floor box range.
- Supplied with temporary construction lid.
- This product has been examined in accordance with AS 3000 and conforms to A.C.M.A. requirements.



ESTABLISHED 1979

Electric Cable Duct Systems P/L

Phone: 1300 123 ECD (323)

Fax: 1300 372 825

Email: info@ecd.net.auwebsite: www.ecd.net.au

ABN 80005544105

ASSEMBLY DIAGRAM

PROTECTOR™ SERIES FLUSH FLOOR BOX – FLUSH STAINLESS STEEL – FB4SFGD70

