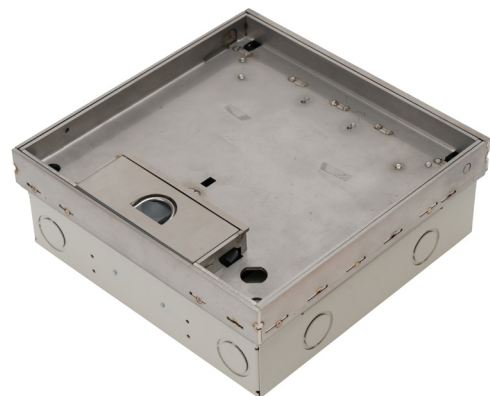


**Flush Floor Box** Deep Recessed, Stainless Steel, Soft Close**AT A GLANCE...**

- Capacity: 4 x single auto switch power outlets and 6 x data mounts
- Box Size: 250 x 250 x 93 mm Deep
- Lid Material: Stainless 304 – No. 4 Linished
- Lid Recess: 20 mm Deep
- Suitable for: Cat6A & 7A Cabling

**“Easy as ECD®”**

- Recessed Stainless Steel Lid and Frame with 20mm rebate for floor finish (typically polished timber boards or ceramic tiles).
- 304 Grade solid Stainless Steel lid construction with No. 4 Linished finish.
- Adjustable Soft Closer to control lid closure – suits floor finish infills up to 1kg (eg. timber packer & carpet or full timber).
- Optional Gas Strut kit available to suit heavier floor finish infills from 2kg (eg. ceramic tile) to 4kg (eg. stone). Custom heavier Gas Strut kits available to order.
- Frame has square edges (not bevelled) to allow flush fitting to adjacent floor finish.
- Height adjustable lid and frame.
- Robust, large capacity cable exit flap with CableShield and stainless lifting handle.
- Capacity for 4 x single auto switched power outlets (supplied) and 6 x data mounts.
- Suitable for category 6A and 7A data cabling with generous bend radius capacity.
  - Suitable for Audio / Video outlets including VGA, HDMI, USB, etc.
  - Modular box body and lid design, interchangeable with plastic and other lids in the ECD® floor box range.



ESTABLISHED 1979

**Electric Cable Duct Systems P/L**

Phone: 1300 123 ECD (323)

Email: [info@ecd.net.au](mailto:info@ecd.net.au)

Fax: 1300 372 825

website: [www.ecd.net.au](http://www.ecd.net.au)

ABN 80005544105

# ASSEMBLY DIAGRAM

## FLUSH FLOOR BOX – DEEP RECESSED, STAINLESS STEEL, SOFT CLOSE – FB4SDR70

OPTIONAL GAS STRUT KIT FOR LID AVAILABLE FOR HEAVY LID INFILLS (PART NO. FB4SDR-GSK) SUITS LID INFILLS FROM 2-4 KG (EG. CERAMIC TILES - STONE) CUSTOM GAS STRUT KITS AVAILABLE TO ORDER FOR HEAVIER INFILLS. LID INFILLS BETWEEN 1-2 KG WILL REQUIRE EITHER A CUSTOM WEIGHTED PLATE (RECESS DEPTH PERMITTING) TO REACH 2KG SO THE LID WILL CLOSE.

CABLE SHIELD® TO CABLE EXIT FLAP ASSEMBLY

FB4SDR STAINLESS STEEL DEEP RECESSED SOFT CLOSING LID AND FRAME ASSEMBLY WITH CABLE EXIT, RUBBER DUST SEAL AND RECESSED LIFTING HANDLE (OVERALL LID SIZE 250 x 250 x 38 DEEP) (RECESS 20mm DEEP)

NOTE: SOFT CLOSER SUITS LID INFILLS UP TO 1KG (EG. TIMBER PACKER & CARPET OR FULL TIMBER INFILL)

POINT LOAD TABLE	
LOAD TYPE	MAX LOAD
25 X 25 PT. LOAD	200kg
150 X 60 WHEEL	180kg

LID ADJUSTMENT LEGS 4 PLACES

OUTLET MOUNTING BRACKET WITH 4 No. AUTO SWITCH GPOS

STEEL BOX BODY (240 x 240 x 93mm DEEP) 12 No. 25ø/32ø COMBINATION CONDUIT KNOCKOUTS

NOMINAL RECESS SIZE 250 x 250 x 100 (NOM.) DEEP FOR TIMBER FLOOR OR 300 x 300 x 100 FOAM BLOCKOUT FOR CONCRETE

OPTIONAL TIMBER FLOOR FIXING BRACKETS



DATA PLATE VIEW

OUTLET MOUNTING BRACKET WITH PROVISION FOR 6 DATA

