

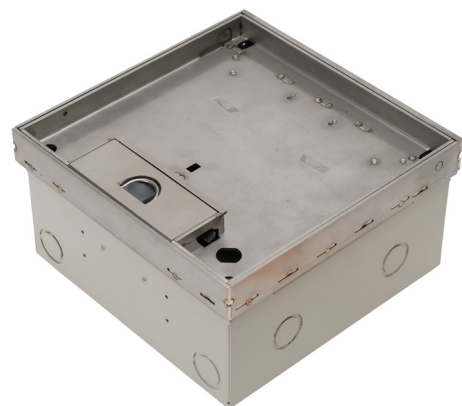
**Flush Floor Box** Deep Recessed, Stainless Steel, Soft Close**AT A GLANCE...**

- Capacity: 4 standard sized plates
- Box Size: 250 x 250 x 133 mm Deep
- Lid Material: Stainless 304 – No. 4 Linished
- Lid Recess: 20 mm Deep
- Suitable for: Cat6A & 7A Cabling

**“Easy as ECD®”**

- Recessed Stainless Steel Lid and Frame with 20mm rebate for floor finish (typically polished timber boards or ceramic tiles).
- 304 Grade solid Stainless Steel lid construction with No. 4 Linished finish.
- Adjustable Soft Closer to control lid closure – suits floor finish inserts up to 1kg (eg. timber packer & carpet or full timber).
- Optional Gas Strut kit available to suit heavier floor finish inserts from 2kg (eg. ceramic tile) up to 4kg (eg. stone). Custom heavier Gas Strut kits available to order.
- Frame has square edges (not beveled) to allow flush fitting to adjacent floor finish.
- Height adjustable lid and frame.
- Robust, large capacity cable exit flap with CableShield and stainless lifting handle.
- Option to fit cam lock if required.

- Capacity for 4 standard outlet plates (2 x double power and 2 x Data and/or A.V.).
- Suitable for category 6A and 7A data cabling with generous bend radius capacity.
- Suitable for Audio / Video outlets including VGA, HDMI, USB, etc.
- Modular box body and lid design, interchangeable with plastic and other lids in the ECD® floor box range.



ESTABLISHED 1979

**Electric Cable Duct Systems P/L**

Phone: 1300 123 ECD (323)

Fax: 1300 372 825

Email: [info@ecd.net.au](mailto:info@ecd.net.au)website: [www.ecd.net.au](http://www.ecd.net.au)

ABN 80005544105

# ASSEMBLY DIAGRAM

## FLUSH FLOOR BOX – DEEP RECESSED, STAINLESS STEEL, SOFT CLOSE – FB4SDR

**CABLE SHIELD®**  
TO CABLE EXIT  
FLAP ASSEMBLY

OPTIONAL GAS STRUT KIT FOR LID AVAILABLE FOR HEAVY LID INFILLS (PART NO. FB4SDR-GSK) SUITS LID INFILLS FROM 2-4 KG (EG. CERAMIC TILES - STONE) CUSTOM GAS STRUT KITS AVAILABLE TO ORDER FOR HEAVIER INFILLS. LID INFILLS BETWEEN 1-2 KG WILL REQUIRE EITHER A CUSTOM WEIGHTED PLATE (RECESS DEPTH PERMITTING) TO REACH 2KG OR A FITTED CAM LOCK TO HOLD THE LID CLOSED.

FB4SDR STAINLESS STEEL DEEP RECESSED SOFT CLOSING LID AND FRAME ASSEMBLY WITH CABLE EXIT, RUBBER DUST SEAL AND RECESSED LIFTING HANDLE (OVERALL LID SIZE 250 x 250 x 38 DEEP) (RECESS 20mm DEEP)

NOTE: SOFT CLOSER SUITS LID INFILLS UP TO 1KG (EG. TIMBER PACKER & CARPET OR FULL TIMBER INFILL)

POINT LOAD TABLE	
LOAD TYPE	MAX LOAD
25 X 25 PT. LOAD	200kg
150 X 60 WHEEL	180kg

OUTLET MOUNTING BRACKET TO SUIT 2 No. DOUBLE GPOs

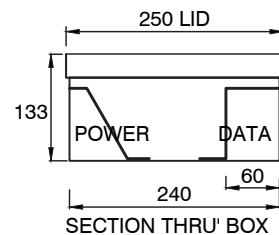
LID ADJUSTMENT LEGS 4 PLACES

OUTLET MOUNTING BRACKET TO SUIT 2 No. STANDARD DATA GRID PLATES

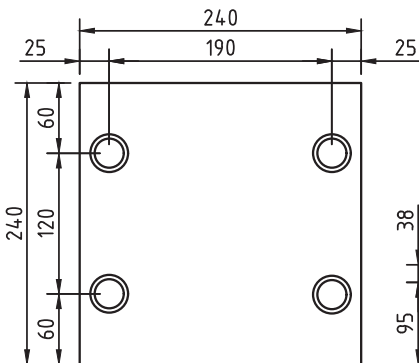


DATA PLATE VIEW

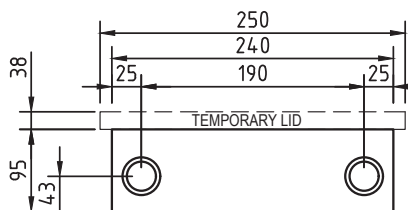
STEEL BOX BODY (240 x 240 x 133mm DEEP) 12 No. 25ø/32ø COMBINATION CONDUIT KNOCKOUTS



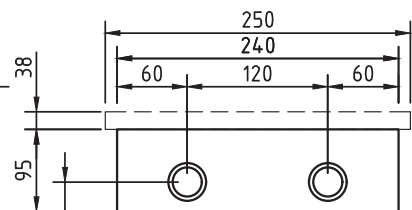
NOMINAL RECESS SIZE  
250 x 250 x 140 (NOM.) DEEP FOR TIMBER FLOOR OR  
300 x 300 x 140 FOAM BLOCKOUT FOR CONCRETE



CONDUIT LOCATION BOX BASE



CONDUIT LOCATION HINGE & EXIT SIDES



CONDUIT LOCATION OUTLET SIDES