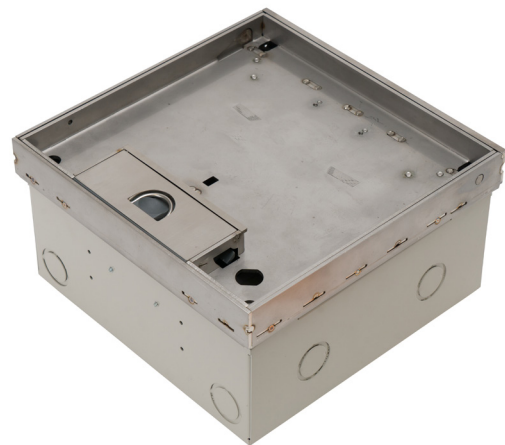
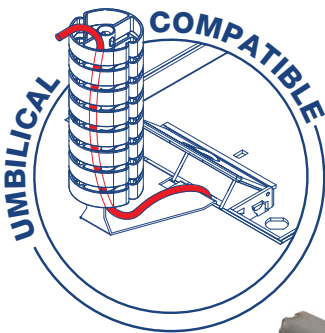


Flush Floor Box Deep Recessed, Stainless Steel, Soft Close**AT A GLANCE...**

- Capacity: 4 standard sized plates
- Box Size: 250 x 250 x 133mm deep (c/w-Lid)
- Lid Material: Stainless 304 – No. 4 Linished
- Lid Recess: 20mm deep
- Suitable for: Cat6A & 7A Cabling
- Load Rating: 120kg (per foot = foot traffic)



- Recessed stainless steel lid and frame with 20mm rebate for floor finish (typically polished timber boards or ceramic tiles).
- 304 Grade solid stainless steel lid construction with No. 4 Linished finish.
- Adjustable Soft Closer to control lid closure – suits floor finish inserts up to 1kg (eg. timber packer & carpet or full timber).
- Optional Gas Strut kit available to suit heavier floor finish inserts from 2kg (eg. ceramic tile) up to 4kg (eg. stone). Custom heavier Gas Strut kits available to order.
- Frame has square edges (not beveled) to allow flush fitting to adjacent floor finish.
- Height adjustable lid and frame.
- Robust, large capacity cable exit flap with CableShield and stainless lifting handle.
- Option to fit cam lock if required.
- Capacity for 4 standard outlet plates (2 x double power and 2 x Data and/or A.V.).
 - Suitable for category 6A and 7A data cabling with generous bend radius capacity.
 - Suitable for Audio / Video outlets including VGA, HDMI, USB, etc.
 - Modular box body and lid design, interchangeable with plastic and other lids in the ECD® floor box range.
 - Supplied with temporary construction lid.

“Easy as ECD®”

ESTABLISHED 1979

Electric Cable Duct Systems P/L

Phone: 1300 123 ECD (323)

Fax: 1300 372 825

Email: info@ecd.net.auwebsite: www.ecd.net.au

ABN 80005544105

ASSEMBLY DIAGRAM

FLUSH FLOOR BOX – DEEP RECESSED, STAINLESS STEEL, SOFT CLOSE – FB4SDR

