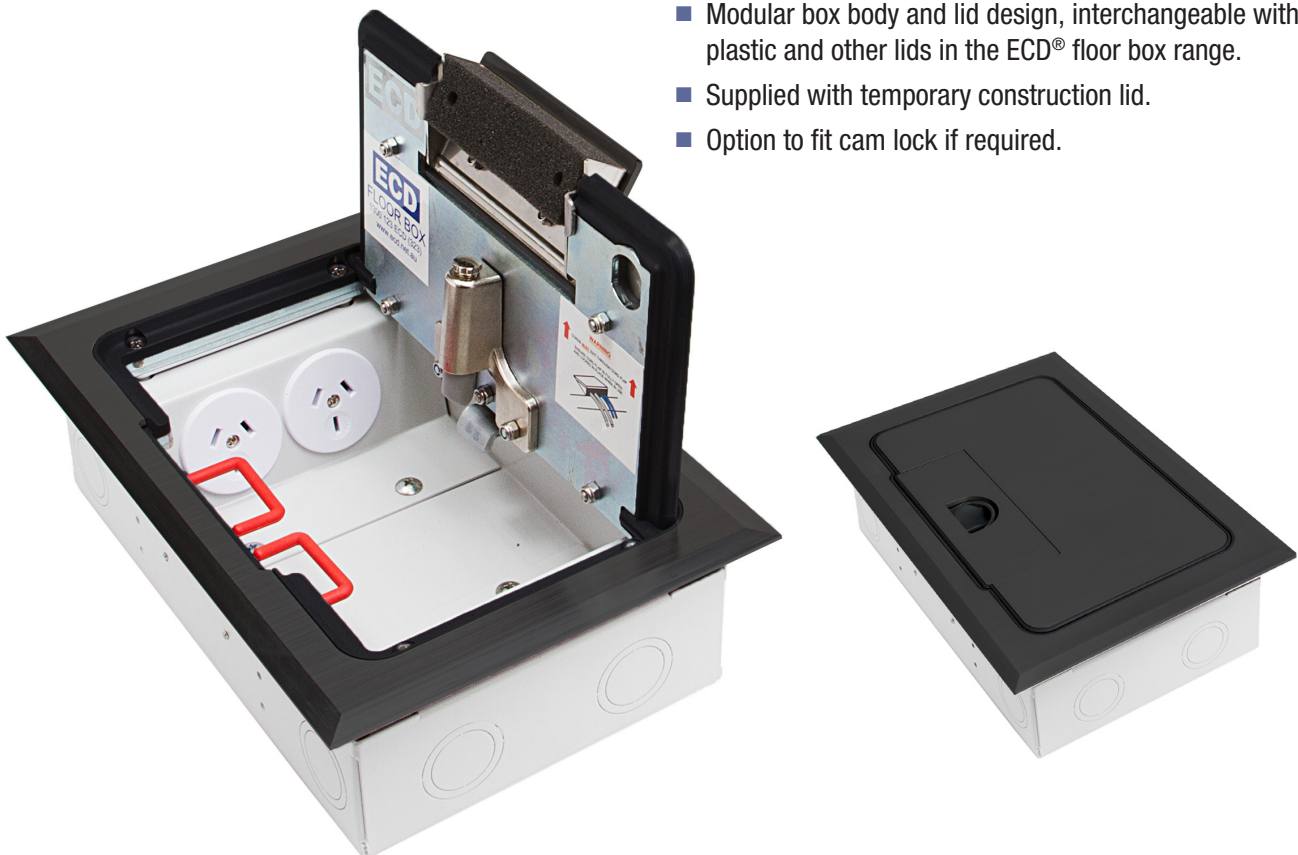


PROTECTOR™ SERIES Flush Floor Box Flush, Black**AT A GLANCE...**

- Capacity: 2 x single auto switch power outlets and 3 x data mounts
- Box Size: 240 x 150 x 70 mm Deep
- Features:
 - **Cable Shield®** Frame
 - Soft close lid
- Lid Material: Stainless Steel – black plated
- Suitable for: Cat6A & 7A Cabling

“Easy as ECD®”

- Flush Protector™ Series Black Plated Stainless Steel lid and frame.
- Protector™ Series features
 - **Cable Shield®** Frame assembly to prevent cables being cut. (Patent Certified 2017100897 & Patent Pending 2015204344)
 - Soft close lid to stop lid from slamming shut
 - Cable retainer for easy cable management.
- Robust and large capacity cable exit flap with retracting lifting handle.
- Capacity for 2 x single auto switch power outlets and 3 x data mounts.
- Suitable for category 6A and 7A data cabling with generous bend radius capacity.
- Suitable for Audio / Video outlets including VGA, HDMI, USB, etc.
- 304 Grade Solid Stainless Steel – black plated.
- Modular box body and lid design, interchangeable with plastic and other lids in the ECD® floor box range.
- Supplied with temporary construction lid.
- Option to fit cam lock if required.



ESTABLISHED 1979

Electric Cable Duct Systems P/L

Phone: 1300 123 ECD (323)

Fax: 1300 372 825

Email: info@ecd.net.auwebsite: www.ecd.net.au

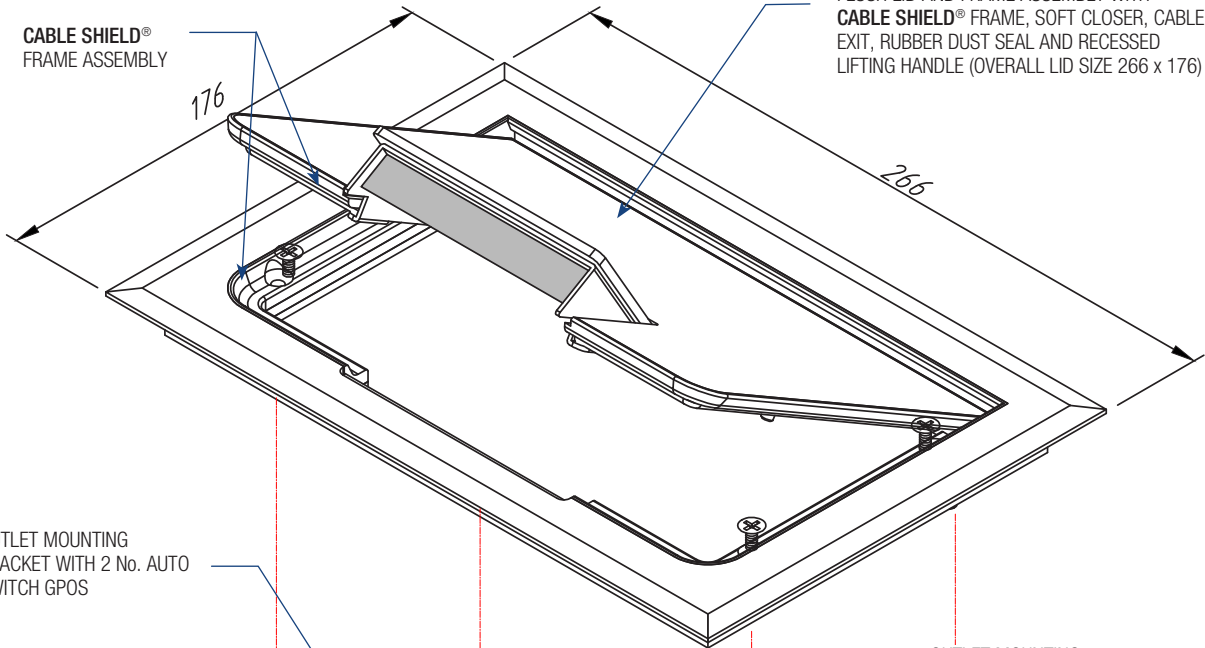
ABN 80005544105

ASSEMBLY DIAGRAM

PROTECTOR™ SERIES FLUSH FLOOR BOX – FLUSH BLACK PLATED STAINLESS STEEL – FB2SFBK70

FB2SFBK BLACK PLATED STAINLESS STEEL FLUSH LID AND FRAME ASSEMBLY WITH **CABLE SHIELD®** FRAME, SOFT CLOSER, CABLE EXIT, RUBBER DUST SEAL AND RECESSED LIFTING HANDLE (OVERALL LID SIZE 266 x 176)

CABLE SHIELD®
FRAME ASSEMBLY



OUTLET MOUNTING
BRACKET WITH 2 No. AUTO
SWITCH GPOS

OUTLET MOUNTING
BRACKET WITH
PROVISION FOR 3 DATA



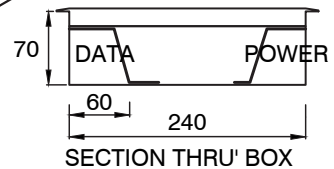
DATA PLATE VIEW

70
(INC. LID)
55
15

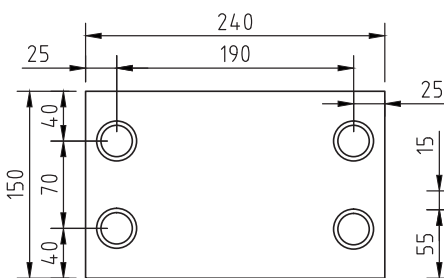
STEEL BOX BODY
(240 x 150 x 70mm DEEP)
12 No. 25ø/32ø COMBINATION
CONDUIT KNOCKOUTS

OPTIONAL TIMBER FLOOR
FIXING BRACKETS
PART No. FBTFB

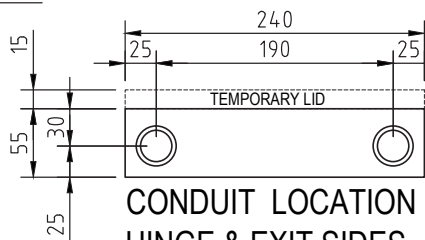
NOMINAL RECESS SIZE
250 x 160 x 80 DEEP FOR TIMBER FLOOR OR
300 x 200 x 80 FOAM BLOCKOUT FOR
CONCRETE



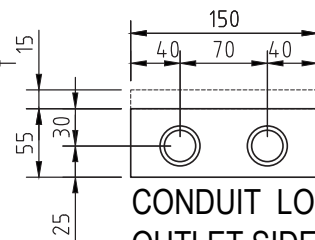
SECTION THRU' BOX



CONDUIT LOCATION
BOX BASE



CONDUIT LOCATION
HINGE & EXIT SIDES



CONDUIT LOCATION
OUTLET SIDES