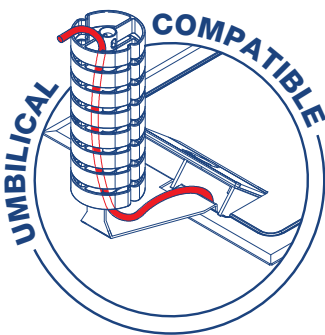


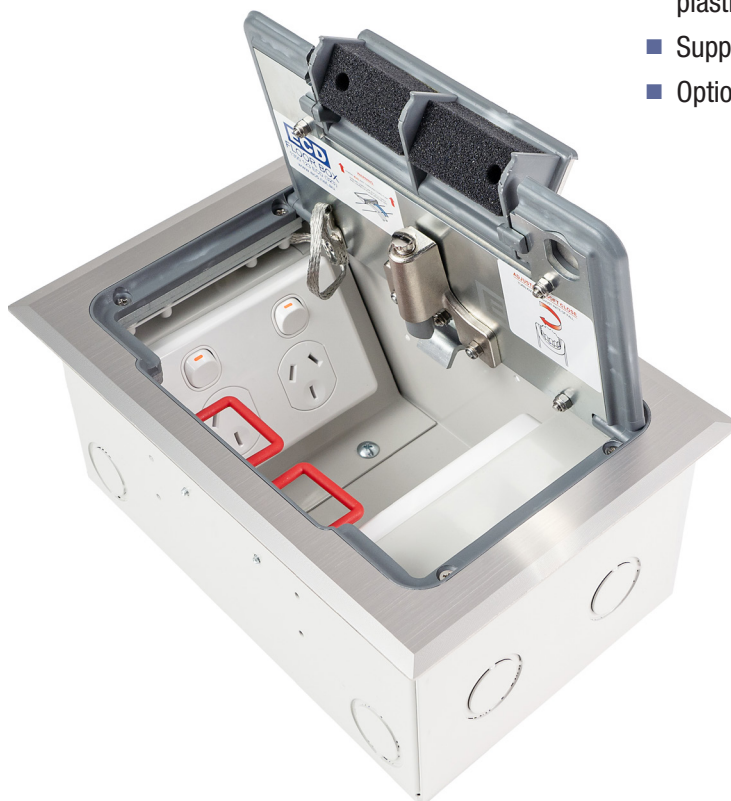
PROTECTOR™ SERIES Flush Floor Box Flush, Stainless Steel

AT A GLANCE...

- Capacity: 2 standard sized plates
- Box Size: 240 x 150 x 110mm deep
- Features:
 - **Cable Shield®** Frame
 - Soft close lid
- Lid Material: Stainless 304 – No. 4 Linished
- Suitable for: Cat6A & 7A Cabling
- Load Rating: 120kg (per foot = foot traffic)



- Flush Protector™ Series stainless steel lid and frame with No. 4 Linished finish.
- Protector™ Series features
 - **Cable Shield®** Frame assembly to prevent cables being cut. (Patent Certified 2019268210 & 2015204344)
 - Soft close lid to stop lid from slamming shut.
 - Cable retainer for easy cable management.
- Robust and large capacity cable exit flap with stainless steel lifting handle.
- Capacity for 2 standard outlet plates (1 x double power & 1 x data and/or A.V.).
- Suitable for category 6A and 7A data cabling with generous bend radius capacity.
- Suitable for Audio / Video outlets including VGA, HDMI, USB, etc.
- 304 Grade solid stainless steel with No. 4 Linished finish to meet P1 requirements for slip resistance in public spaces (dry areas).
- Modular box body and lid design, interchangeable with plastic and other lids in the ECD® floor box range.
- Supplied with temporary construction lid.
- Option for factory fitted cam lock if required.



“Easy as ECD®”



ESTABLISHED 1979

Electric Cable Duct Systems P/L

Phone: 1300 123 ECD (323)

Email: info@ecd.net.au

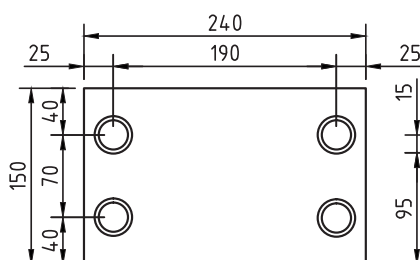
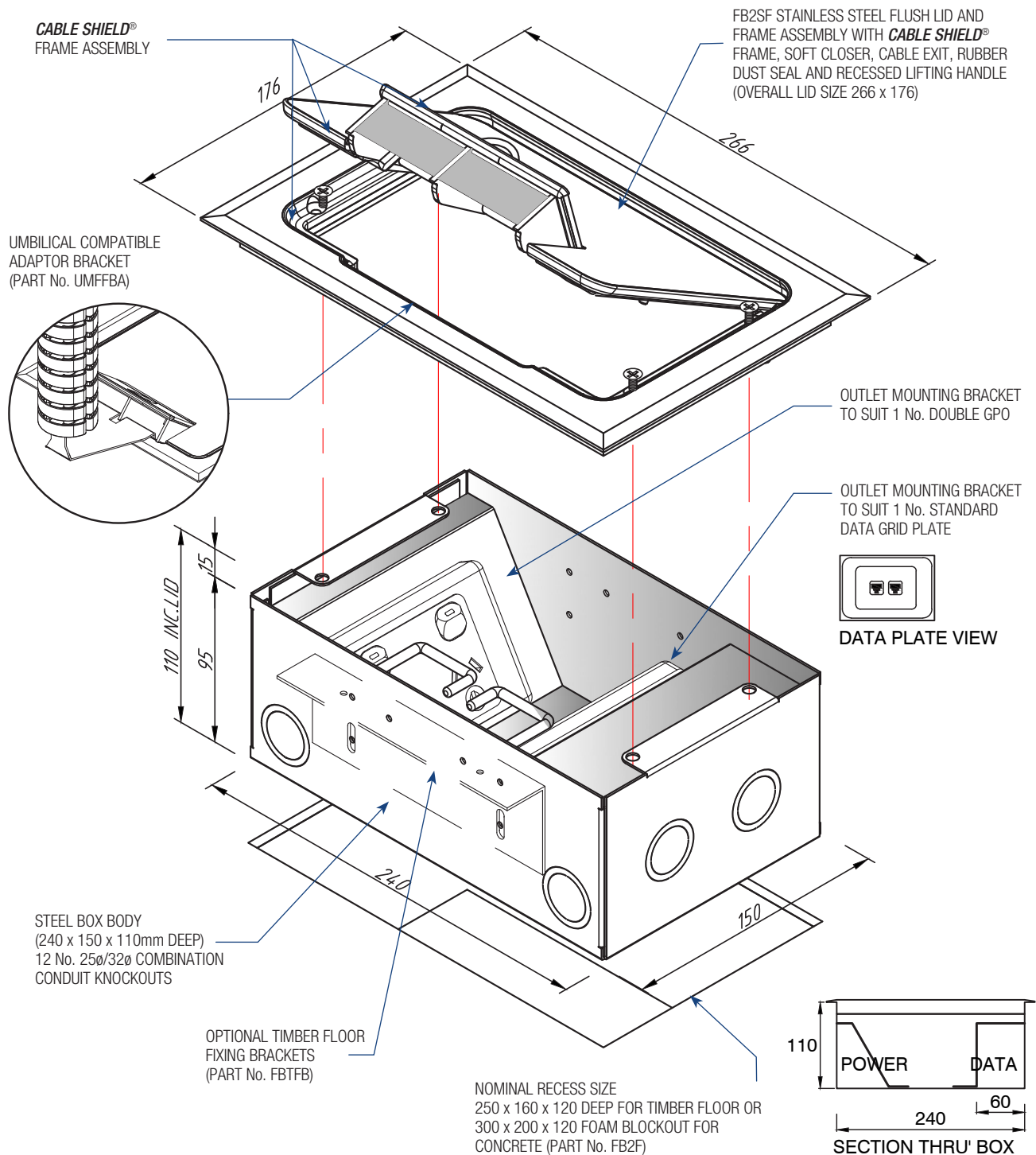
Fax: 1300 372 825

website: www.ecd.net.au

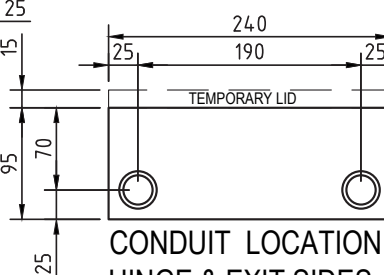
ABN 80005544105

ASSEMBLY DIAGRAM

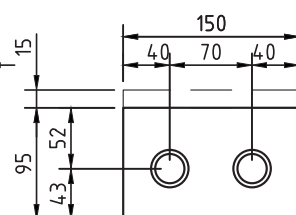
PROTECTOR™ SERIES FLUSH FLOOR BOX – FLUSH, STAINLESS STEEL – FB2SF



CONDUIT LOCATION
BOX BASE



CONDUIT LOCATION
HINGE & EXIT SIDES



CONDUIT LOCATION
OUTLET SIDES