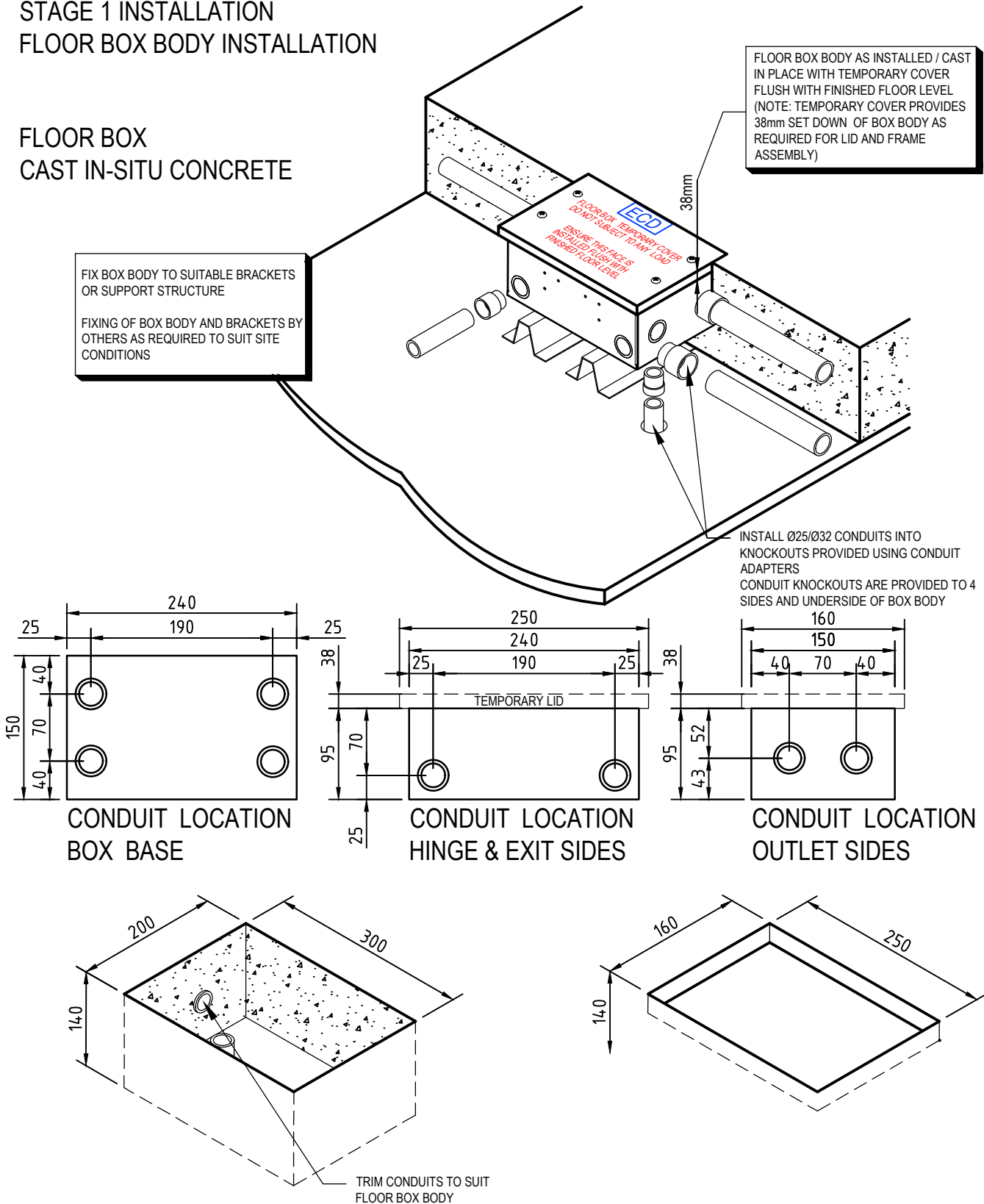


FB2SDR FIT OFF GUIDE

STAGE 1 INSTALLATION FLOOR BOX BODY INSTALLATION

FLOOR BOX CAST IN-SITU CONCRETE



Electric Cable Duct Systems Pty. Ltd.

Ph: 1300 123 ECD (323) Fax: (03) 9899 5042

Email: info@ecd.net.au

www.ecd.net.au

ABN 80005544105

Skirting, Floor & Wall Duct | Floor & Desk Boxes | Service Posts | Umbilicals | Soft Wiring

STAGE 2 INSTALLATION FINAL FIT OFF OF FLOOR BOX

FB2SDR STAINLESS STEEL
LID AND FRAME ASSEMBLY
FIX TO FLOOR BOX WITH
4 No. M4 X 15 CSK
SCREWS SUPPLIED

POWER OUTLET MOUNTING
BRACKET
FIX OUTLETS TO PLATE WITH 6
GAUGE SELF TAPPING
SCREWS PROVIDED
FIX PLATE TO BOX BODY WITH
2 No. MUSHROOM HEAD
SCREWS PROVIDED

LID ADJUSTMENT LEGS
ADJUST NUT ON LOWER LEG &
SCREW LOWER LEG INTO
PROVISION ON LID FRAME,
ENSURING LEG REACHES
FLOOR BOX BASE & LID
ACHIEVES DESIRED LEVEL

VOICE / DATA / AV OUTLET
MOUNTING BRACKET
FIX OUTLETS TO PLATE WITH 6
GAUGE SELF TAPPING
SCREWS PROVIDED
FIX PLATE TO BOX BODY WITH
2 No. MUSHROOM HEAD
SCREWS PROVIDED

FLOOR BOX BODY AS INSTALLED / CAST
IN PLACE WITH TEMPORARY COVER
REMOVED. (NOTE: BOX BODY IS 38mm
BELOW FINISHED FLOOR TO SUIT LID
AND FRAME ASSEMBLY)

FLOOR BOX BODY EARTH TAIL
ENSURE CONNECTION TO EARTH
CIRCUIT TO OBTAIN CORRECT EARTHING
AS REQUIRED FOR FLOOR BOX BODY

CUT TILE/TIMBER/FLOOR COVERING
TO THIS EDGE



Electric Cable Duct Systems Pty. Ltd.

Ph: 1300 123 ECD (323) Fax: (03) 9899 5042

Email: info@ecd.net.au

www.ecd.net.au

ABN 80005544105