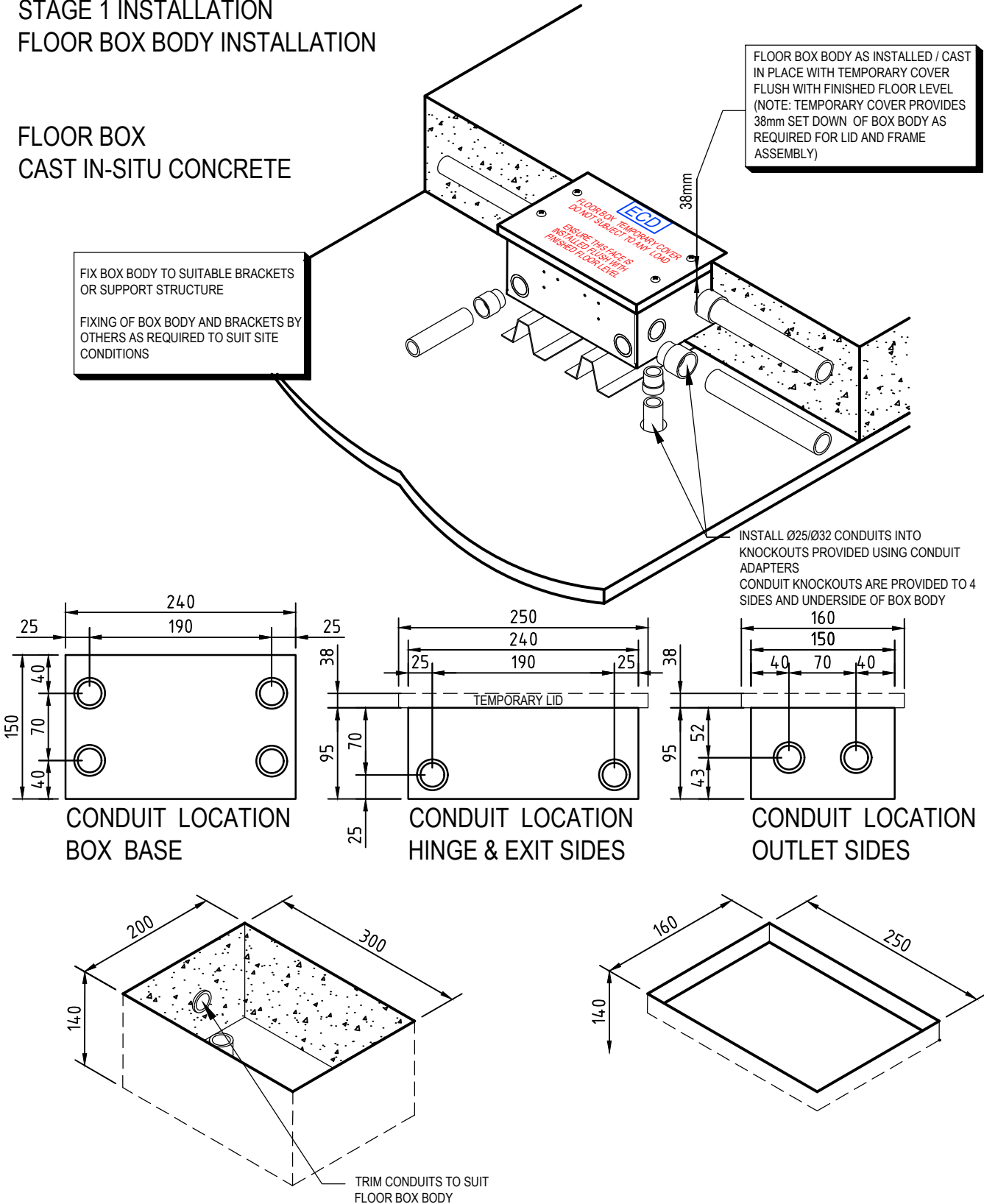


# FB2BDR FIT OFF GUIDE

## STAGE 1 INSTALLATION FLOOR BOX BODY INSTALLATION

### FLOOR BOX CAST IN-SITU CONCRETE



CONCRETE BLOCK OUT

TIMBER FLOOR CUT-OUT



ESTABLISHED 1979

**Electric Cable Duct Systems Pty. Ltd.**

Ph: 1300 123 ECD (323) Fax: (03) 9899 5042

Email: [info@ecd.net.au](mailto:info@ecd.net.au)

[www.ecd.net.au](http://www.ecd.net.au)

ABN 80005544105

## STAGE 2 INSTALLATION FINAL FIT OFF OF FLOOR BOX

FB2BDR BRASS LID AND  
FRAME ASSEMBLY  
FIX TO FLOOR BOX WITH  
4 No. M4 X 15 CSK  
SCREWS SUPPLIED

POWER OUTLET MOUNTING  
BRACKET  
FIX OUTLETS TO PLATE WITH 6  
GAUGE SELF TAPPING  
SCREWS PROVIDED  
FIX PLATE TO BOX BODY WITH  
2 No. MUSHROOM HEAD  
SCREWS PROVIDED

LID ADJUSTMENT LEGS  
ADJUST NUT ON LOWER LEG &  
SCREW LOWER LEG INTO  
PROVISION ON LID FRAME,  
ENSURING LEG REACHES  
FLOOR BOX BASE & LID  
ACHIEVES DESIRED LEVEL

VOICE / DATA / AV OUTLET  
MOUNTING BRACKET  
FIX OUTLETS TO PLATE WITH 6  
GAUGE SELF TAPPING  
SCREWS PROVIDED  
FIX PLATE TO BOX BODY WITH  
2 No. MUSHROOM HEAD  
SCREWS PROVIDED

FLOOR BOX BODY AS INSTALLED / CAST  
IN PLACE WITH TEMPORARY COVER  
REMOVED. (NOTE: BOX BODY IS 38mm  
BELOW FINISHED FLOOR TO SUIT LID  
AND FRAME ASSEMBLY)

FLOOR BOX BODY EARTH TAIL  
ENSURE CONNECTION TO EARTH  
CIRCUIT TO OBTAIN CORRECT EARTHING  
AS REQUIRED FOR FLOOR BOX BODY

CUT TILE/TIMBER/FLOOR COVERING  
TO THIS EDGE



**Electric Cable Duct Systems Pty. Ltd.**

Ph: 1300 123 ECD (323) Fax: (03) 9899 5042

Email: [info@ecd.net.au](mailto:info@ecd.net.au)

[www.ecd.net.au](http://www.ecd.net.au)

ABN 80005544105