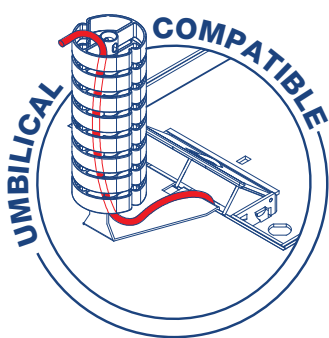


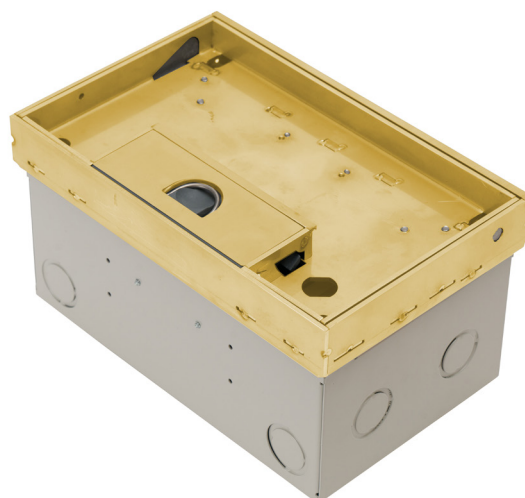
## Flush Floor Box Deep Recessed, Brass, Soft Close

### AT A GLANCE...

- Capacity: 2 standard sized plates
- Box Size: 250 x 160 x 133mm deep (c/w-Lid)
- Lid Material: Brass – No. 4 Linished
- Lid Recess: 20mm deep
- Suitable for: Cat6A & Cat7A Cabling
- Load Rating: 120kg (per foot = foot traffic)



- Recessed brass lid and frame with 20mm rebate for floor finish (typically polished timber boards or ceramic tiles).
- Solid brass lid construction with No. 4 Linished finish.
- Adjustable Soft Closer to control lid closure – suits floor finish infills up to 2kg (eg. timber packer & carpet, full timber, ceramic tile or stone).
- Frame has square edges (not beveled) to allow flush fitting to adjacent floor finish.
- Height adjustable lid and frame.
- Robust, large capacity cable exit flap with CableShield and brass lifting handle.
- Option to fit cam lock if required.
- Capacity for 2 standard outlet plates (1 x double power and 1 x Data and/or A.V.).
- Suitable for category 6A and 7A data cabling with generous bend radius capacity.
- Suitable for Audio / Video outlets including VGA, HDMI, USB, etc.
- Modular box body and lid design, interchangeable with plastic and other lids in the ECD® floor box range.
- Supplied with temporary construction lid.



**“Easy as ECD®”**



ESTABLISHED 1979

**Electric Cable Duct Systems P/L**

Phone: 1300 123 ECD (323)

Email: [info@ecd.net.au](mailto:info@ecd.net.au)

Fax: 1300 372 825

website: [www.ecd.net.au](http://www.ecd.net.au)

ABN 80005544105

## ASSEMBLY DIAGRAM

### FLUSH FLOOR BOX – DEEP RECESSED, BRASS, SOFT CLOSE – FB2BDR

