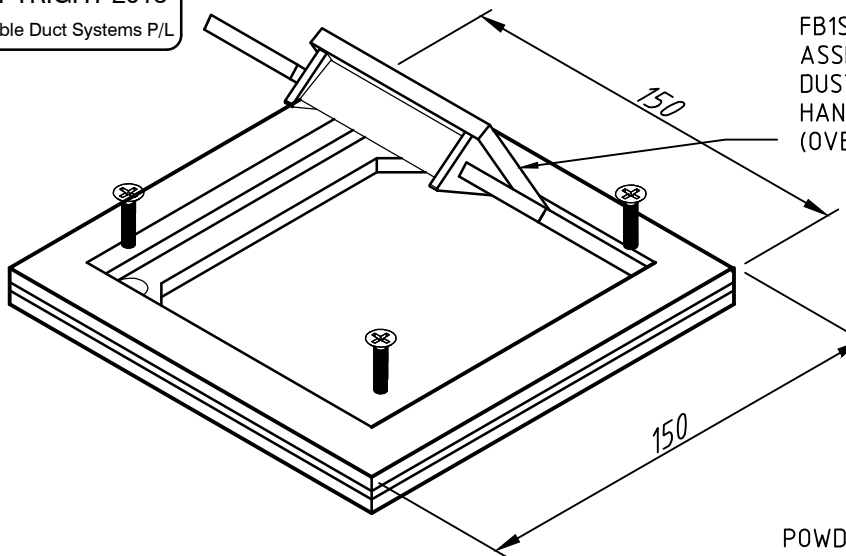


FB1SHD STAINLESS STEEL LID AND FRAME ASSEMBLY WITH CABLE EXIT, RUBBER DUST SEAL AND RECESSED LIFTING HANDLE. FINISHED FINISH (OVERALL LID SIZE 150 x 150)

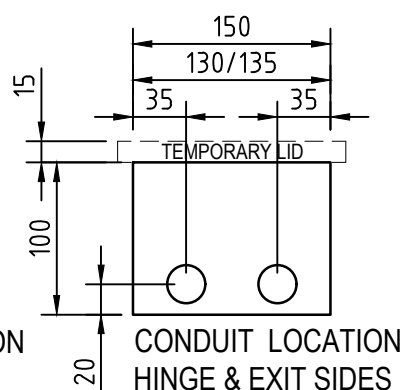
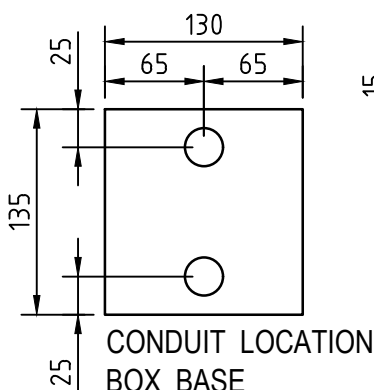
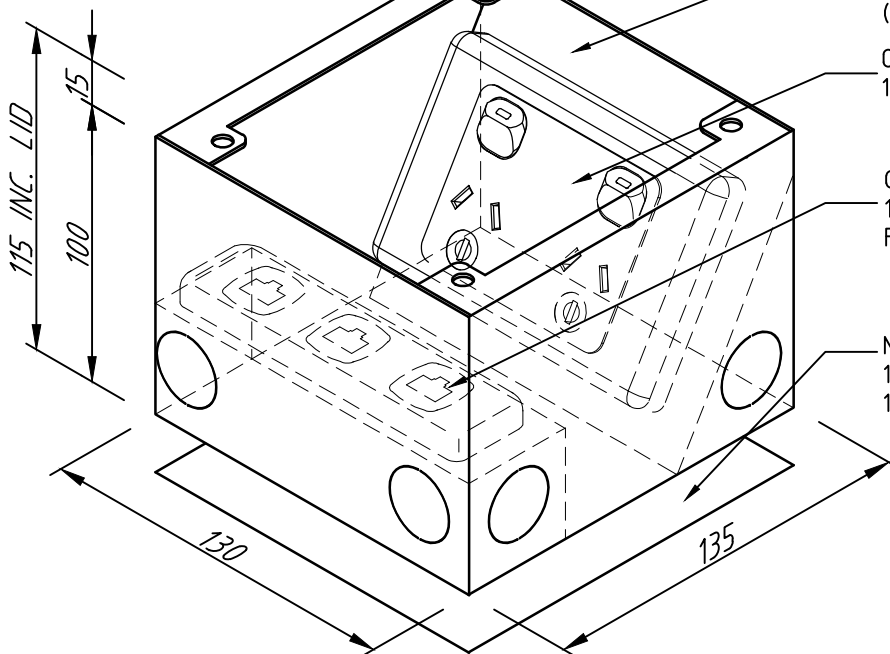


POWDER COATED STEEL BOX BODY 130 X 135 X 115mm DEEP (NOM.) WITH 10 No. 25 ϕ CONDUIT KNOCKOUTS (2 TO EACH SIDE & 2 ON BASE)

OUTLET MOUNTING BRACKET TO SUIT 1 No. STANDARD G.P.O.

OUTLET MOUNTING BRACKET TO SUIT 1 No. 3 GANG ARCHITRAVE PLATE FOR DATA / A.V

NOMINAL RECESS SIZE: 150x150x120 DEEP FOR TIMBER FLOOR OR 155x155x120 FOAM BLOCKOUT FOR CONCRETE



POINT LOAD TABLE.	
LOAD TYPE	MAX LOAD
25 X 25 PT. LOAD	1400kg
150 X 60 WHEEL	1550kg
TOT. VEHICLE (1550kg X 4 WHEELS)	6200kg

NOM. CAR KERB WEIGHT 1800kg.
(FALCON/COMMODORE)

Skirting Duct
Floor Duct
Wall Duct
Floor Boxes



Service Posts
Umbilicals
Soft Wiring
Pedestals

Electric Cable Duct Systems Pty. Ltd.
Unit 2, 25-37 Chapman Street, Blackburn North. VIC 3130
Tel: (03) 9890 6646 www.ecd.net.au

SCALE:	NTS
DATE:	26.10.15
DRAWN:	D.S.C.
CHECKED:	

DRAWING:	FB1SHD FLOOR OUTLET BOX WITH 2 No. AUTO GPO'S & 3 DATA OUTLET S HEAVY DUTY FLUSH STAINLESS STEEL LID & FRAME
----------	---

PROJECT:	
CAT.	FB1SHD
DWG. NO:	D01
REV.	A
ISSUE.	2