

Stainless Steel Floor Box Heavy Duty 12mm Deep Recess**AT A GLANCE...**

- Features: Load rated suitable for vehicle traffic – see chart over
- Capacity: 1 standard size GPO
1 No. 3 Gang Data Plate
- Box Size: 150 x 150 x 120 mm Deep
- Lid Material: Stainless Steel
- Lid Rebate: 12 mm Deep
- Suitable for: Compact installations

- Heavy duty – load rated floor box suitable for vehicular traffic.
- Ideal for car showrooms and shopping centres.
- 304 Grade Stainless Steel lid construction with No. 4 Linished finish.
- 12mm rebate for floor finish (typically timber boards or ceramic tiles).
- Frame has square edges (not bevelled) to allow flush fitting to adjacent floor finish.
- Robust, large cable exit flap and stainless steel lifting handle.
- Capacity 1 x standard double GPO and 3 x Data (grid plate supplied).
- Supplied with temporary construction lid.
- This product has been examined in accordance with AS 3000 and conforms to A.C.M.A. requirements.

“Easy as ECD®”

ESTABLISHED 1979

Electric Cable Duct Systems P/L

Phone: 1300 123 ECD (323)

Email: info@ecd.net.au

Fax: 1300 372 825

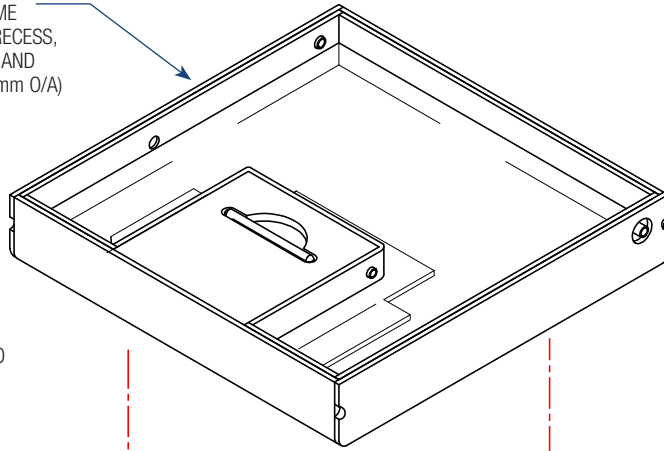
website: www.ecd.net.au

ABN 80005544105

ASSEMBLY DIAGRAM

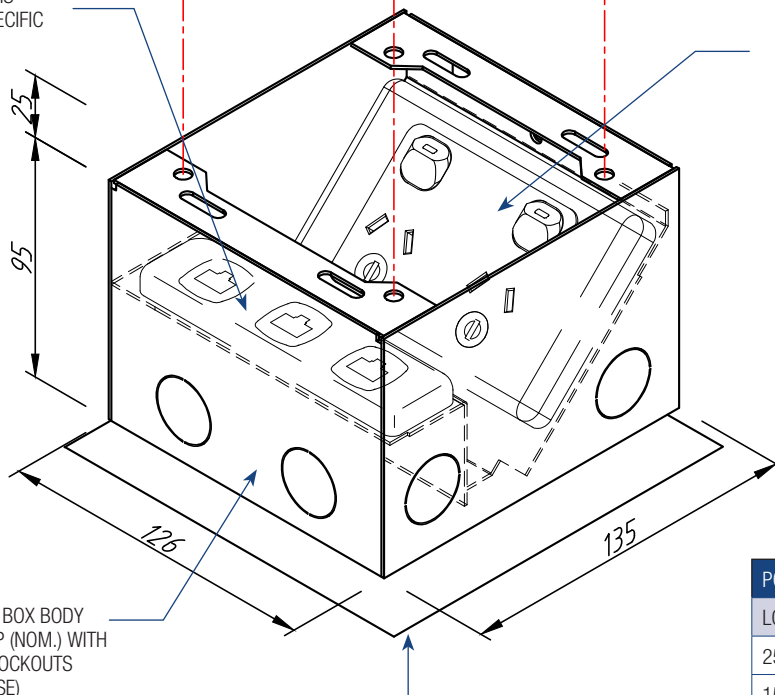
STAINLESS STEEL FLOOR BOX – HEAVY DUTY 12MM DEEP RECESS – FB149HD

STAINLESS STEEL LID AND FRAME ASSEMBLY WITH 12 mm DEEP RECESS, CABLE EXIT FLAP, DUST GUARD AND LIFTING LOOP (150 X 150 X 25 mm O/A)



OUTLET MOUNTING BRACKET TO SUIT 1 No. 3 GANG ARCHITRAVE PLATE FOR DATA / A.V. (GRID SUPPLIED)

*ASSESS SUITABILITY PRIOR TO INSTALLATION TO ENSURE AVAILABLE DATA SPACE IS SUFFICIENT TO MEET SPECIFIC REQUIREMENTS



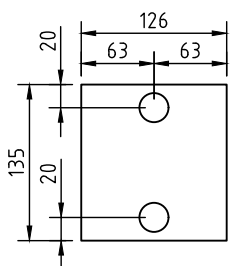
OUTLET MOUNTING BRACKET TO SUIT 1 No. STANDARD POWER OUTLET PLATE (NOT SUPPLIED)

POWDER COATED STEEL BOX BODY 126 x 135 x 95 mm DEEP (NOM.) WITH 10 No. 25 ϕ CONDUIT KNOCKOUTS (2 EACH SIDE & 2 ON BASE)

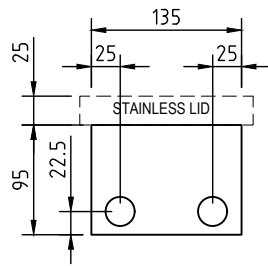
NOMINAL RECESS SIZE 150 x 150 x 130 DEEP FOR TIMBER FLOOR OR 175 x 175 x 140 FOAM BLOCKOUT FOR CONCRETE (PART No. FB149F)

POINT LOAD TABLE	
LOAD TYPE	MAX LOAD
25 X 25 PT. LOAD	500KG
150 X 60 WHEEL	500KG
TOTAL VEHICLE (550KG X 4 WHEELS)	2200KG

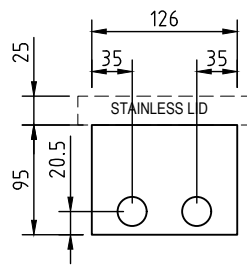
NOM. CAR KERB WEIGHT 1800KG (FALCON/COMMODORE)



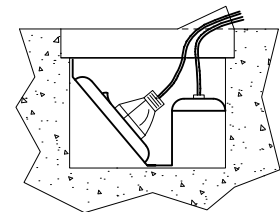
CONDUIT LOCATION BOX BASE



CONDUIT LOCATION LONG SIDES



CONDUIT LOCATION SHORT (HINGE & EXIT) SIDES



ASSEMBLED SIDE VIEW OF FB149HD TWO COMPARTMENT FLOOR BOX SHOWING CABLE EXIT FLAP IN USE