

## Stainless Steel Floor Box

### AT A GLANCE...

- Capacity: 1 standard sized plate
- Box Size: 135 x 126 x 95 mm Deep
- Lid Material: Stainless Steel
- Suitable for: Compact installations  
GPO/USB combination outlets

***“Easy as ECD®”***

- Compact and stylish, the FB145 Flush Floor Box provides ready access to power (or communication) outlets recessed in the floor.
- Suitable for use in: Modern open plan living areas, home theatres, showrooms, shop-front displays, boardroom tables, schools, universities, and public buildings.
- Available in Stainless Steel, the hard wearing 145 x 145 mm lid bevels down to a fine edge under foot and is suitable for use with polished floor boards, carpet, ceramic tiles and vinyl floor coverings (not suitable for use in wet areas).
- The lid is also available with a ‘non’ bevelled edge – suitable for a flush finish with tiled, timber or other hard finish floors. Add ‘SQ’ to part number (FB145SQ).
- Capacity 1 x double GPO.
  - Deeper outlet mounting plate allows for combination GPOs (with USB or HDMI).
  - Two small flaps allow cables out of the box when in use and close flat when not in use.
  - A versatile, practical and decorative solution to your open plan cabling needs.
  - This product has been examined in accordance with AS 3000 and conforms to A.C.M.A requirements.



ESTABLISHED 1979

**Electric Cable Duct Systems P/L**

Phone: 1300 123 ECD (323)

Email: [info@ecd.net.au](mailto:info@ecd.net.au)

Fax: 1300 372 825

website: [www.ecd.net.au](http://www.ecd.net.au)

ABN 80005544105

## ASSEMBLY DIAGRAM

### STAINLESS STEEL FLOOR BOX – FB145

FLUSH STAINLESS STEEL LID AND FRAME  
ASSEMBLY WITH BEVELLED EDGE AND  
TWO FOLD DOWN CABLE EXIT FLAPS  
(145 x 145 mm)  
(NON BEVELLED FRAME AVAILABLE ON  
REQUEST. ADD 'SQ' TO PART No.)

All dimensions quoted are  
nominal only. Drawings,  
images and text are for  
illustrative purposes only  
and product details and  
dimensions are subject to  
change without notice.

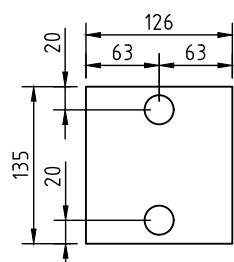
This product is not suitable  
for use in wet areas,  
is intended for use with fixed  
wiring only and must be  
installed by a licensed  
Electrical Mechanic in  
accordance with AS 3000,  
SAA Wiring Rules and  
A.C.M.A. requirements.

OUTLET MOUNTING  
BRACKET TO SUIT 1 No.  
STANDARD OUTLET PLATE  
(NOT SUPPLIED)  
(EG POWER/DATA/A.V.  
– INCLUDES THE USE OF  
POWER COMBINATION  
PLATES WITH USB, HDMI,  
ETC.)

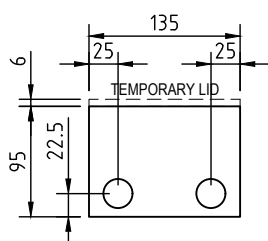
TEMPORARY LID TO FLOOR BOX  
BODY DURING CONSTRUCTION

POWDER COATED STEEL BOX BODY  
126 x 135 x 95 mm DEEP (NOM.) WITH  
10 No. 25 $\phi$  CONDUIT KNOCKOUTS  
(2 EACH SIDE & 2 ON BASE)  
NOTE: ONLY USE CONDUIT  
LOCATIONS THAT ALIGN WITH OUTLET  
COMPARTMENT

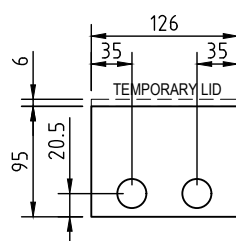
NOMINAL RECESS SIZE 138 x 129 x 105 DEEP FOR  
TIMBER FLOOR OR 155 x 155 x 115 FOAM BLOCKOUT  
FOR CONCRETE (PART No. FB140F)



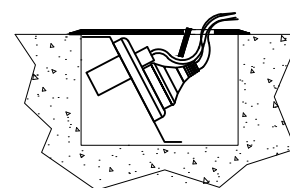
CONDUIT LOCATION  
BOX BASE



CONDUIT LOCATION  
LONG SIDES



CONDUIT LOCATION  
SHORT (HINGE & EXIT) SIDES



ASSEMBLED SIDE VIEW OF FB145  
SINGLE COMPARTMENT FLOOR BOX  
SHOWING CABLE EXIT FLAP IN USE

NOTE: ONLY USE CONDUIT LOCATIONS THAT ALIGN WITH POWER COMPARTMENT