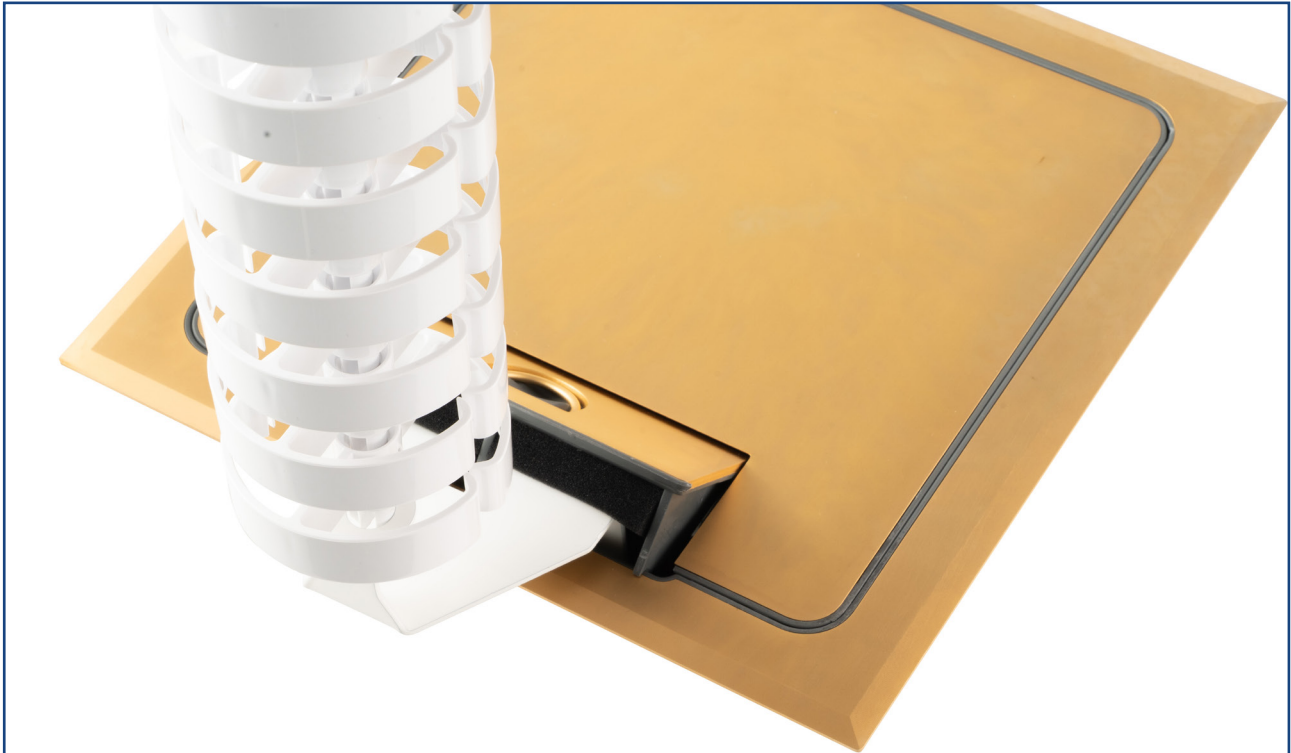


# UMBILICAL TO FLOOR BOX ADAPTOR

(Excludes Umbilical)

CAT. NO. **UMFFBA\***

\*NOMINATE COLOUR – BLACK-BK, WHITE-WE, SILVER-SR



## UMBILICAL TO FLOOR BOX CONNECTION – BRASS FLUSH/RECESSED LIDS

Example indicative of umbilical connection to floor boxes with brass flush/recessed lids

Refer to floor box catalogue pages for specific models including –

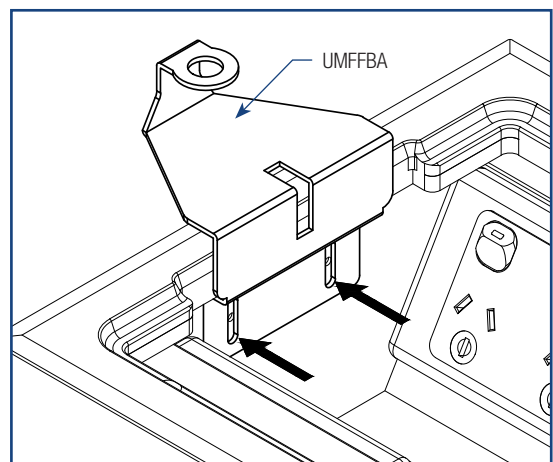
- FB2BF
- FB2BR
- FB4BR
- FB4BF

UMBILICALS TO BE ORDERED SEPARATELY	
LENGTH	PART NO.
780mm	UMF780* c/w UNDER DESK MOUNT
3000mm	UMF3000FM* c/w CEILING MOUNT
4000mm	UMF4000FM* c/w CEILING MOUNT
6000mm	UMF6000FM* c/w CEILING MOUNT

\*NOMINATE COLOUR – BLACK-BK, WHITE-WE, SILVER-SR, TRANSLUCENT-TR

Refer to UMFFBA fit-off guide for connection details.

**“Easy as ECD®”**



ESTABLISHED 1979

**Electric Cable Duct Systems P/L**

Phone: 1300 123 ECD (323)

Email: [info@ecd.net.au](mailto:info@ecd.net.au)

Fax: 1300 372 825

website: [www.ecd.net.au](http://www.ecd.net.au)

ABN 80005544105