

Squound Service Post

At a glance...

- Size: 70 x 70mm
- Stock Colours: Natural Anodised
- Length: Up to 6.5m
- Suitable for: Category 6 Cabling

- A 'squound' shaped extruded aluminium service post.
- The service post is supplied natural anodised as standard.
- Also available in black and white.
- This product has been examined in accordance with AS 3000 and conforms to A.C.M.A. requirements.
- Please nominate height of post.



“Easy as ECD”

ECD

ESTABLISHED 1979

Electric Cable Duct Systems P/L

Phone: 1300 123 ECD (323)

Email: info@ecd.net.au

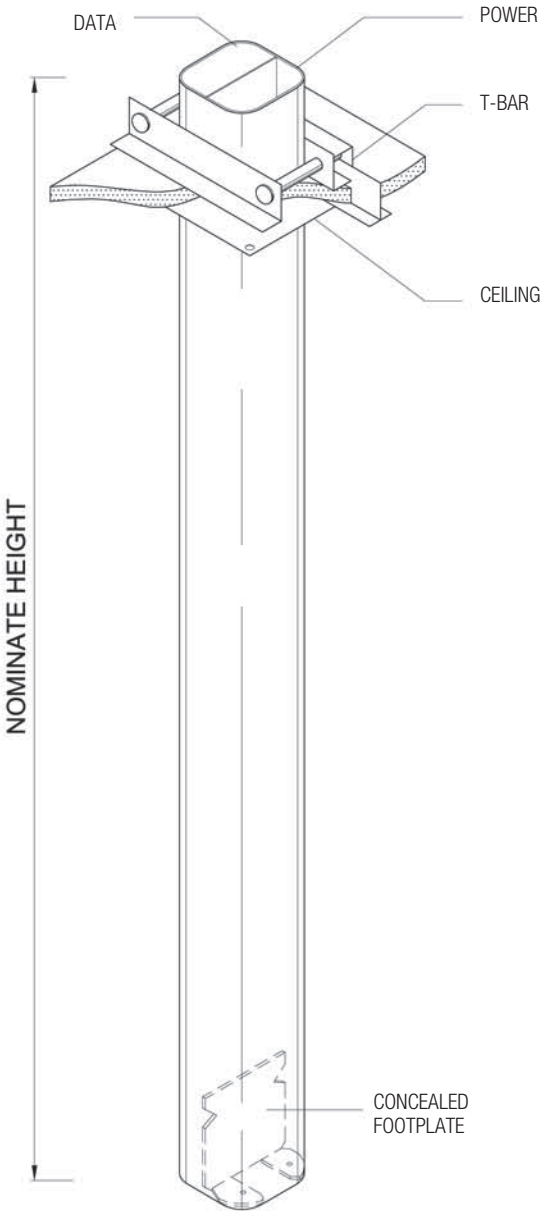
Fax: 1300 372 825

website: www.ecd.net.au

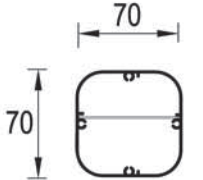
ABN 80005544105

ASSEMBLY DIAGRAM

SQUOUND SERVICE POST – SP7020



SECTION SP7020 POST



2-Division