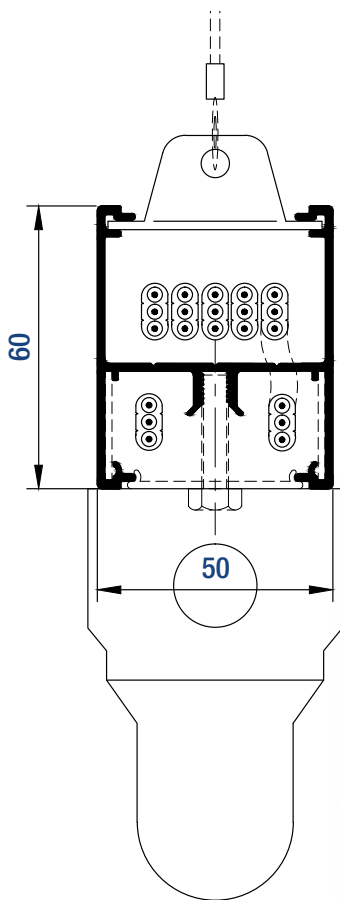


Lighting Trunk

AT A GLANCE...

- Size: 60 x 50 mm
- Light Fitting: Surface Mounted
- Cover: "Snap-fit" Aluminium
- Stock Colour: Natural Anodised & White

"Easy as ECD®"



- The LT6050 Overhead Service Duct has been designed to carry lighting cables and fittings overhead where ceiling access is not available.
- The unique 2 compartment design allows for easy management of lighting circuits and/or segregation of lighting control data cabling.
- The LT6050 duct body and lid is manufactured from extruded aluminium.
- Optional snap in extruded aluminium covers can be fitted top or bottom.
- This product can be surface mounted, rod suspended or wire suspended.
- The LT6050 is supplied in Natural Anodised and White as standard.
- This product has been examined in accordance with AS 3000 and conforms to A.C.M.A. requirements.



ESTABLISHED 1979

Electric Cable Duct Systems P/L

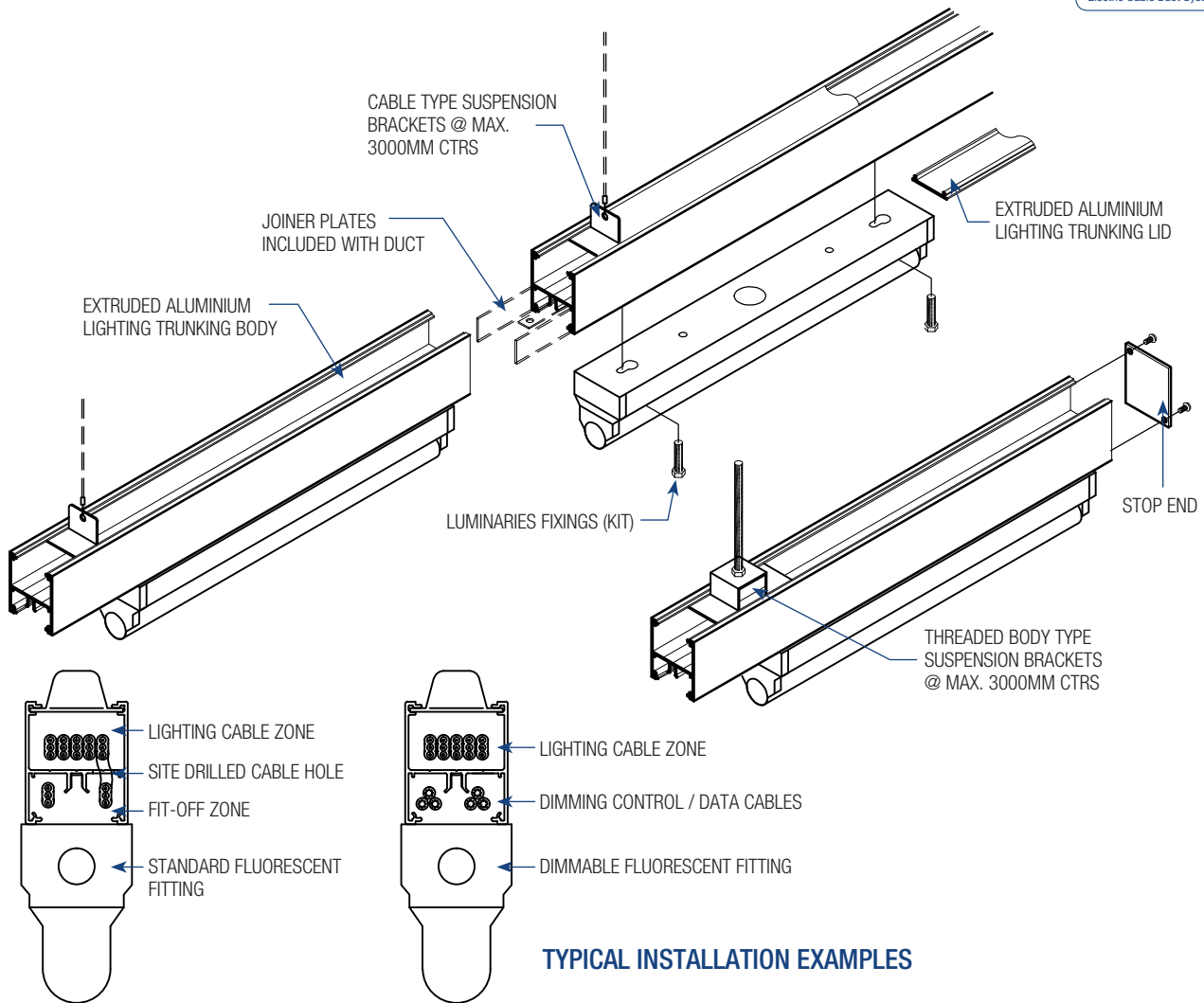
Phone: 1300 123 ECD (323)

Email: info@ecd.net.au

Fax: 1300 372 825

website: www.ecd.net.au

ABN 80005544105



TYPICAL INSTALLATION EXAMPLES

SUGGESTED SPECIFICATION

- The contractor shall allow to supply and install Electric Cable Duct Systems P/L Cat No. LT6050 (60x50mm) Lighting Trunking suspended from or surface mounted to the ceiling or as otherwise nominated and described below.
- When installed suspended from the ceiling structure the contractor shall use the supplied suspension brackets suitable for wire or threaded rod. The brackets shall be spaced at maximum 2400mm centres for normal use.
- The body and lid of the Lighting Trunking shall be extruded aluminium in a natural (clear) anodised finish or pre-treated and powder coated to a standard colour (White or Black) or as nominated by the architect.
- The system shall be earthed in accordance with AS 3000 wiring rules and conform to A.C.M.A requirements.
- Bends shall be site mitred to fine tolerances with concealed reinforcing angles riveted in position. Adjacent lengths of duct body shall be splice joined with slide in joiner plates. Screw fixed stop ends shall be fitted where necessary.
- Installation shall be performed by experienced duct installers.

PARTS LIST

DESCRIPTION	PART NO.	COLOUR
Lighting Trunking Body – 6.0m lengths	LT6050D	Nominate
Lighting Trunking Lid – 3.0m lengths	LT6050L	Nominate
Suspension Bracket – Suits cable suspension (Max 3000mm ctrs)	LT6050SBC	
Suspension Bracket – Suits threaded rod (Max 3000mm ctrs)	LT6050SBT	
Luminaries fixing kit – Suits fluorescent fittings only	LT6050LFK	
Stop end	LT6050SE	Nominate

Nominate Colour/Finish: BK=Black, WE = White, NA=Natural Anodised